

Pelham Road Wimbledon, SW19 1NZ

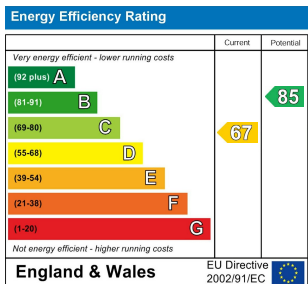
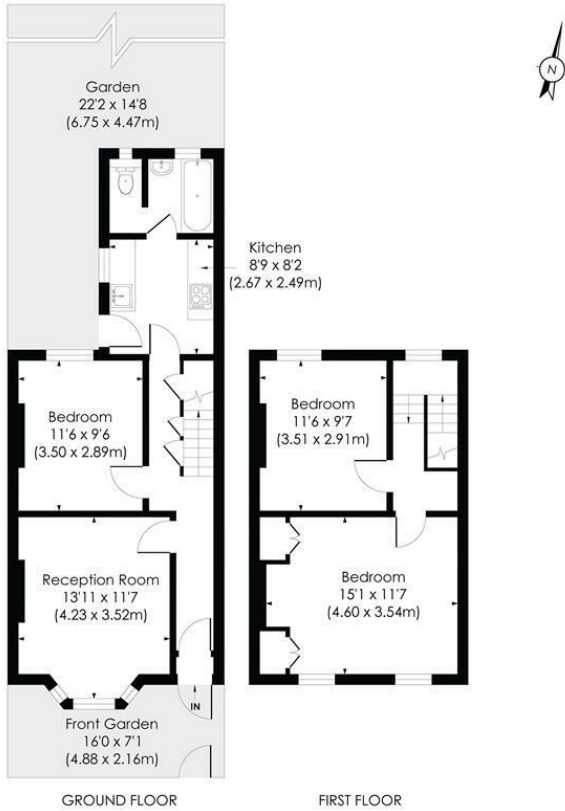
£725,000 Freehold



A two double bedroom Victorian property with no onward chain, located in the sought after Ministers area of Wimbledon close to the town centre and excellent schools. Benefiting from a lounge as well as a dining room, separate kitchen and two well proportioned double bedrooms, this fantastic opportunity also has great potential to extend subject to the usual consents.

PELHAM ROAD, SW19

Approx. Gross Internal Floor Area
855 Sq. ft/79.48 Sq. m



pixangle PROPERTY MARKETING
 This floor plan has been prepared for the purpose of illustration only in accordance with the latest RICS code of measuring practice and is not to scale. All measurements and areas are approximate and whilst every effort has been made to ensure the accuracy of the plan contained here, no responsibility is taken for any error, omission or misstatement.

- Ministers Location
- No Onward Chain
- Victorian Terraced House
- Two Double Bedrooms
- Two Reception Rooms
- Excellent Transport Links
- Sought after Local Schools
- Superb Extension Potential (STPP)
- EPC Rating D
- Council Tax Band E

For Free Mortgage Quote and Best Mortgage Rates, call an Ellisons Mortgage Advisor on 020 8944 9494



Although these particulars are believed to be correct, their accuracy is not guaranteed and they do not form part of any contract.

Celebrating 30 years of successful Sales and Lettings in Merton

